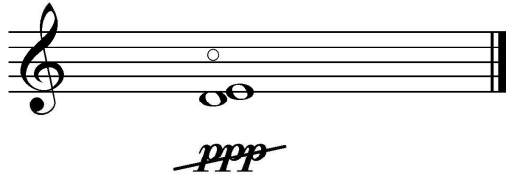


Nanophony

for violin or viola
closely microphoned



d: open string
e: sul G

as soft as possible: litterally! almost not moving bow!

miked, with contact mic
set filter to cut off frequencies below 160Hz
and above 5000Hz
set Mic-Input-Level to -6 to -12dB
set hard-limiter to plus 36db
play very loud!

alternative settings:
miked, with contact mic
use limiter to control maximum loudness
set compression to maximum
create a mixture of feedback and string-sound
play very loud!

40, 80 or 120 seconds
(in one undivided piece)

see example sounds of
A: input signal
B: output signal
(example sounds are not for use in performance)